

The Optec® 5000PG Rehab Vision Screener



FRONT VIEW

FEATURES INCLUDE:

- Unsurpassed homogeneous illumination that complies with the American National Standards Institute (ANSI)
- L.E.D. lighting system
- Distance/near lens system
- See and point access doors on both sides
- Lightweight and portable; less than 15 lb. (6.8 kg)
- Requiring only 2 square ft. (0.6 m) of space
- Scratch-resistant and washable surface
- 2-year warranty

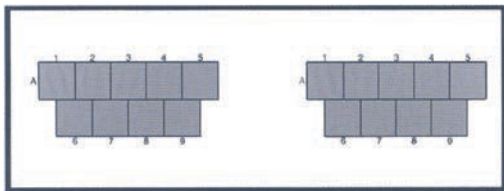


BACK VIEW

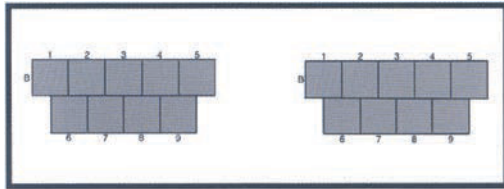
SPECIALLY-DESIGNED TEST PACKAGE:

- Contrast sensitivity testing with F.A.C.T. - The Industry Standard
- Calibrated day and night testing
- With and without glare

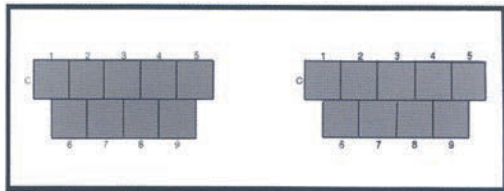
Optec 5000PG Rehab Slide Package



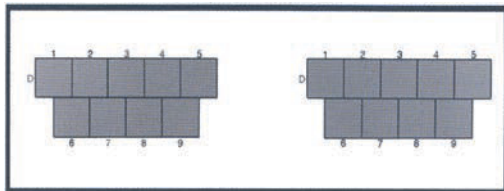
Slide #1 (3000-171)** Far Point
Functional Acuity Contrast Test
1.5 Cycles Per Degree Monocular



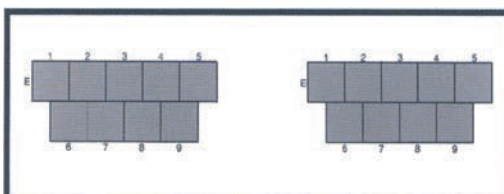
Slide #2 (3000-172) Far Point
Functional Acuity Contrast Test
3 Cycles Per Degree Monocular



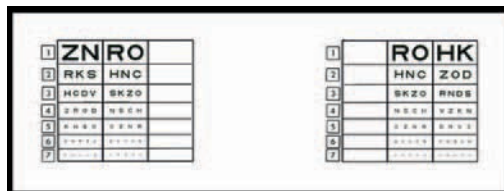
Slide #3 (3000-173) Far Point
Functional Acuity Contrast Test
6 Cycles Per Degree Monocular



Slide #4 (3000-174) Far Point
Functional Acuity Contrast Test
12 Cycles Per Degree Monocular



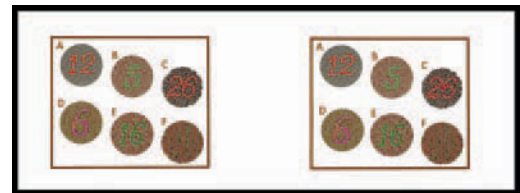
Slide #5 (3000-175) Far Point
Functional Acuity Contrast Test
18 Cycles Per Degree Monocular



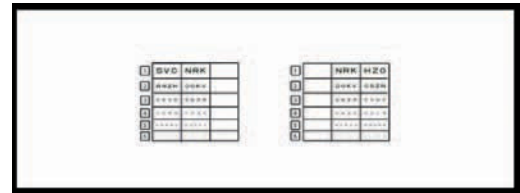
Slide #6 (2000-003) Far Point
Acuity Right Eye & Left Eye Monocular
or Both Eyes Simultaneously (20/200-20/20)



** Enlarged to show pattern



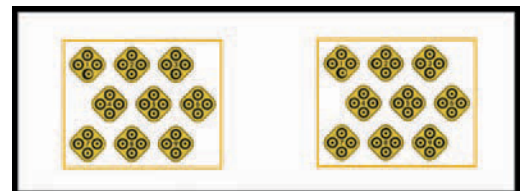
Slide #7 (2000-010) Far Point
Color Perception (Pseudo Ishihara)



Slide #8 (2000-007) Near Point
Acuity Right Eye & Left Eye Monocular
or Both Eyes Simultaneously (20/100-20/20)



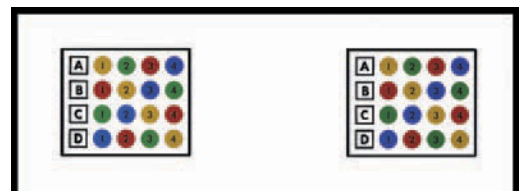
Slide #9 (2000-012) Far Point
Lateral Phoria (1 Diopter Increments)



Slide #10 (2000-024) Far Point
Stereo Depth Perception
(400-20 Seconds of Arc)



Slide #11 (2000-148) Far Point
Road Sign Recognition & Depth Perception
(620-323-145 Seconds of Arc)



Slide #12 (2000-149) Far Point
Color Recognition (Red, Yellow, Green, Blue)